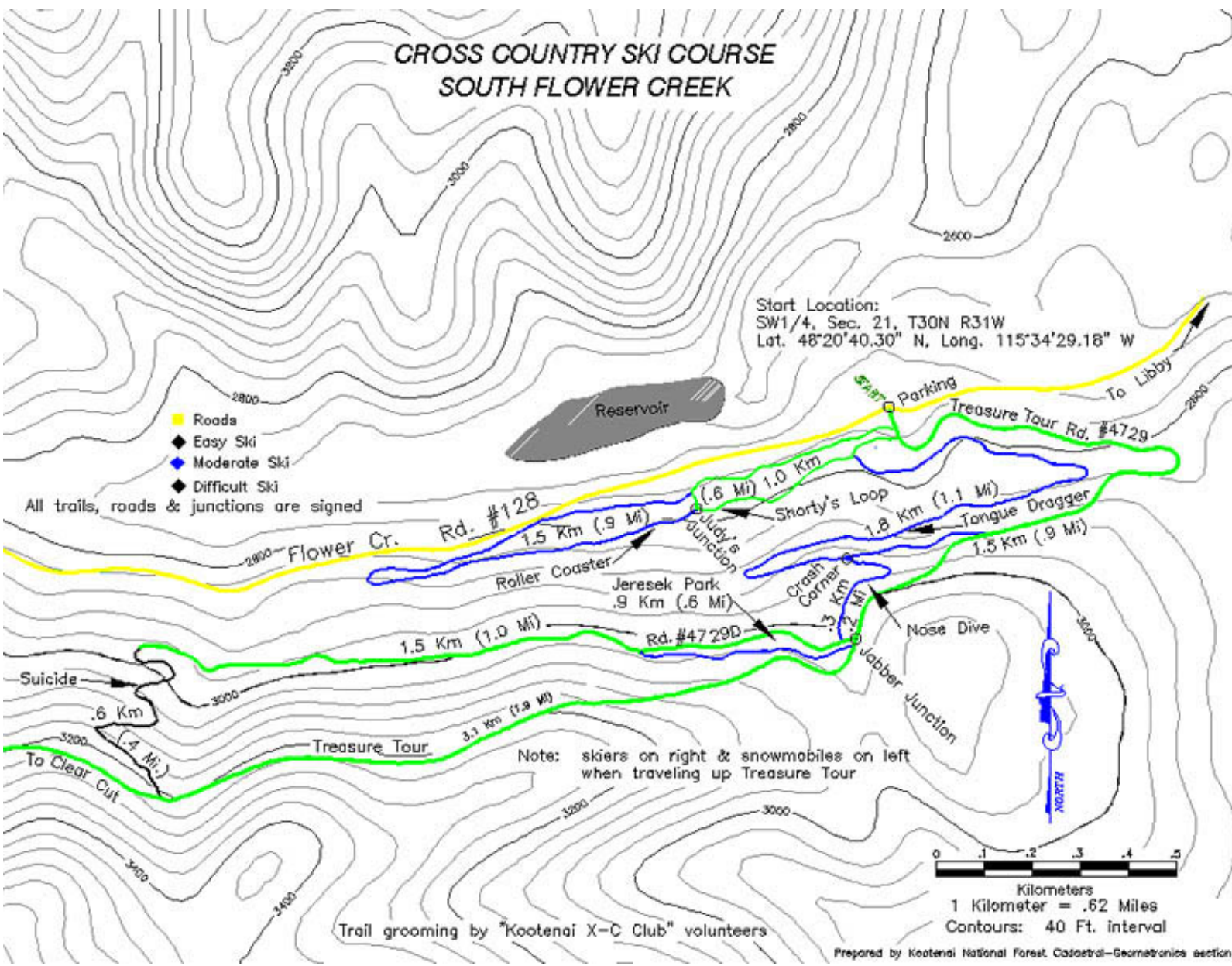


CROSS COUNTRY SKI COURSE SOUTH FLOWER CREEK



Start Location:
SW1/4, Sec. 21, T30N R31W
Lat. 48°20'40.30" N, Long. 115°34'29.18" W

- Roads
- ◆ Easy Ski
- ◆ Moderate Ski
- ◆ Difficult Ski

All trails, roads & junctions are signed

Note: skiers on right & snowmobiles on left when traveling up Treasure Tour

Trail grooming by "Kootenai X-C Club" volunteers

Prepared by Kootenai National Forest Catastroph-Geomorphology section